

The Surreal Body

May 30–August 1, 2026



KATARZYNA PRZEZWAŃSKA
Venus 2025



JULIA KUNIN
Vasarely's Smile, 2022

The Surreal Body positions surrealism as an intrinsic aspect of lived experience, in which the body remains open to transformation, imagination, and the unseen forces that shape our understanding of ourselves and the world around us. Bringing together works by Dorothy Hood, Julia Kunin, Joel Parsons, and Katarzyna Przewańska, the exhibition explores the body as a mutable form that extends beyond its physical limits. Across drawing, sculpture, and ceramics, disembodied forms merge with architecture, landscape, ornament, and nature, revealing embodiment as constructed and continually in flux.

Though separated by generation and medium, the artists share an interest in forms that resist stability. Hood's drawings present figures that appear skeletal, mechanical, and at times alien, inhabiting psychological spaces where dream and memory converge. Kunin's ceramic sculptures similarly blur distinctions between body, architecture, and ornament, creating hybrid forms that draw upon mythology, decorative traditions, and queer understandings of transformation and self-fashioning. Parsons's sculptures move between image and object, distilling bodily presence into fragments charged with desire, memory, and psychic tension. Through coded symbols and partial forms, his work reflects the instability of identity and the performative dimensions of queer experience. Working with minerals, plants, and other natural materials, Przewańska creates sculptural environments that foreground the reciprocal relationship between human perception and the living world.

Collectively, the body emerges as a vessel for projection and transformation: a site where psychic, material, and ecological realities meet.

DOROTHY HOOD (1918–2000, Bryan, TX)

Dorothy Hood was a pioneering American modernist whose work bridged abstraction, figuration, and visionary imagery. After two decades in Mexico City among artists including Leonora Carrington and Remedios Varo, she returned to Houston, where she developed a singular visual language rooted in psychological, cosmic, and metaphysical exploration.

JULIA KUNIN (b. 1961, Vermont)

Julia Kunin is a Brooklyn-based artist whose ceramic sculptures merge body, architecture, and ornament. Drawing on craft traditions, mythology, feminism, and queer abstraction, she creates hybrid forms that are at once playful, sensual, and symbolic. Kunin is a 2026 Guggenheim Fellow.

JOEL PARSONS (b. 1985, Springdale, AR)

Joel Parsons is a Memphis-based artist, curator, and educator. Working across sculpture, installation, and performance, his practice explores queer intimacy, desire, memory, and identity through coded symbols, fragmented forms, and a distinctive blend of humor and emotional resonance.

KATARZYNA PRZEZWAŃSKA (b. 1984, Poland)

Katarzyna Przewańska is a Warsaw-based artist whose work moves between sculpture, installation, painting, and architecture. Incorporating minerals, plants, and found materials, she investigates the relationship between nature and material culture, creating works that are both sensorial and transformative.

The Surreal Body

DOROTHY HOOD, JULIA KUNIN,
JOEL PARSONS & KATARZYNA PRZEZWAŃSKA

INDEX OF WORKS



JULIA KUNIN
Lepidoptera Compromise 2024
ceramic
24 x 32 x 3 1/2 in.



JULIA KUNIN
Vasarely's Smile, 2022
ceramic
11 x 2 1/2 x 7 in.



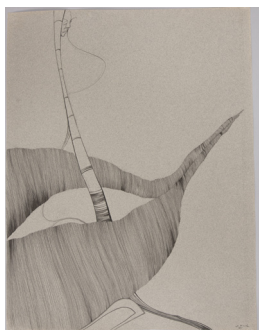
JULIA KUNIN
Laughing Castle 2023
ceramic
17 x 8 x 7 in.



JULIA KUNIN
After Jacovitz, 2013
ceramic
15 x 9 1/2 x 3 inches



JULIA KUNIN
Standing Double Dish
2015, ceramic
21 x 14 x 11 inches



DOROTHY HOOD
Lone Sailor
c. 1970
pen and ink on paper
26 x 20 in.



DOROTHY HOOD
Space Shield
c. 1970
pen and ink on paper
26 x 20 in.



DOROTHY HOOD
Growing
c. 1970
pen and ink on paper
26 x 20 in.



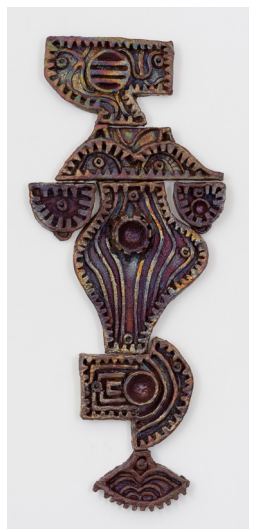
DOROTHY HOOD
Other Premonitions
c. 1980
pencil and ink on paper
25 1/2 x 19 3/4 in.



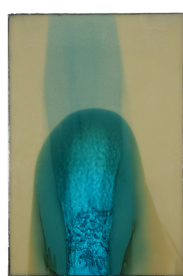
DOROTHY HOOD
Crocodile Jubilation
c. 1980
pencil and ink on paper
25 5/8 x 19 3/4 in.



JULIA KUNIN
Queen of Mars 2017
ceramic
59 x 30 x 4 inches



JULIA KUNIN
Zippering Figure 2017
ceramic
48 x 20 1/2 x 3 inches



JOEL PARSONS
Loaded (after Bernini's Ecstasy of Saint Teresa) 2025
stained glass, ink on synthetic vellum



JOEL PARSONS
I saw you dancing and loved you (Touch Me in the Morning) 2024, stained and etched glass, mirror, vitreous enamel on copper, enamel paint, silk shantung, vinyl
18 x 15 x 2 1/2 in.



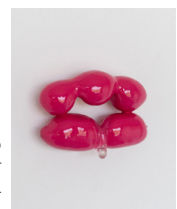
JOEL PARSONS
I. The Magician 2024
enamel and copper on glass
14 x 10 1/2 inches



KATARZYNA PRZEZWAŃSKA
Venus 2025
tamarind pods, polyurethane, car paint, marble
8 x 3 1/2 x 3 1/2 in.



KATARZYNA PRZEZWAŃSKA
diastema (after Georgia May Jagger) 2024, granite, marble
8 x 16 x 8 1/2 in.



Pillow Lips 2025
tamarind pods, nail gel, carpaint
2 3/4 x 2 x 2 in.